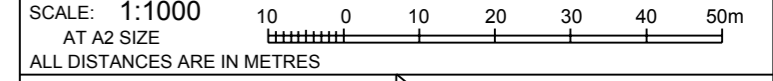


VER.	AMENDMENT	AUTHORISED BY	DATE
2	AUDIT REQUIREMENTS, ADD DEFERRED MARKING NOTATION	M. HORE	11/5/2009

FOR INTERESTS AND NOTIFICATIONS SEE SHEET 5
FOR INSET SEE SHEET 4

TYPE FREEHOLD	
PURPOSE SUBDIVISION	
PLAN OF	
LOTS 336, 337, 356, 357, 440-521, 1001, 1004, 9003, EASEMENTS, ROADS & RESTRICTIVE COVENANT	
DISTRICT CANNING	SSA YES
TOWNSITE	FORMER TENURE
FILE	SEE TABLE SHEET 5
LOCAL AUTHORITY CITY OF CANNING	
LOCALITY QUEENS PARK	
INDEX ON BG34(2) 18.19	FIELD BOOK 98175



SURVEYOR'S CERTIFICATE - Reg 54		SURVEYOR'S CERTIFICATE - Compiled	
I, MAX HORE, hereby certify that this plan is accurate and is a correct representation of the - (a) * survey; and/or (b) * calculations from measurements, undertaken for the purposes of this plan and that it complies with the relevant written law(s) in relation to which it is lodged. (* delete if applicable)		I hereby certify that this compiled plan (a) is a correct and accurate representation of the survey(s) of the subject lands, and (b) is in accordance with the relevant law in relation to which it is lodged.	

Licensed Surveyor	Date	Licensed Surveyor	Date
SURVEY FIRM		FUGRO SPATIAL SOLUTIONS Pty. Ltd.	
		18 PROWSE STREET WEST PERTH, W.A., 6005 TEL. (08) 9282 4100 FAX. (08) 9322 1775 QUEENS PARK STAGE 2 PLAN No. LS18224-87.R.1	

LODGED	TYPE OF VALIDATION	APPROVED BY
DATE	FULL AUDIT	WESTERN AUSTRALIAN PLANNING COMMISSION
FEE PAID	LEGAL COMPONENT	FILE 132256
ASSESS No.	DOCKET	DELEGATED UNDER S16 P & D ACT 2005
	CERTIFIED CORRECT	DATE
	I.S.C.	
	F.S.C.	

IN ORDER FOR DEALINGS	
SUBJECT TO	
FOR INSPECTOR OF PLANS & SURVEYS / AUTHORISED LAND OFFICER	DATE
APPROVED REG 26A (1), (4)	

INSPECTOR OF PLANS & SURVEYS / AUTHORISED LAND OFFICER	DATE
--	------



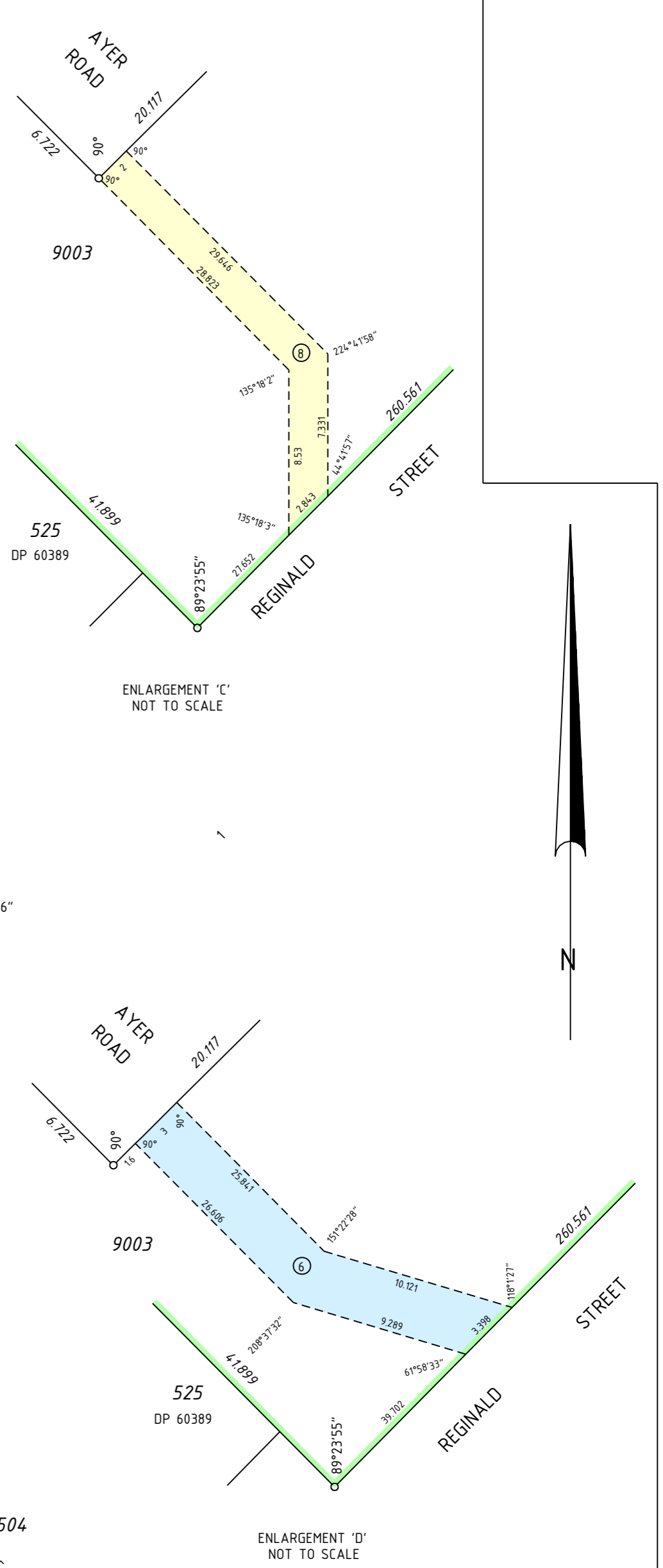
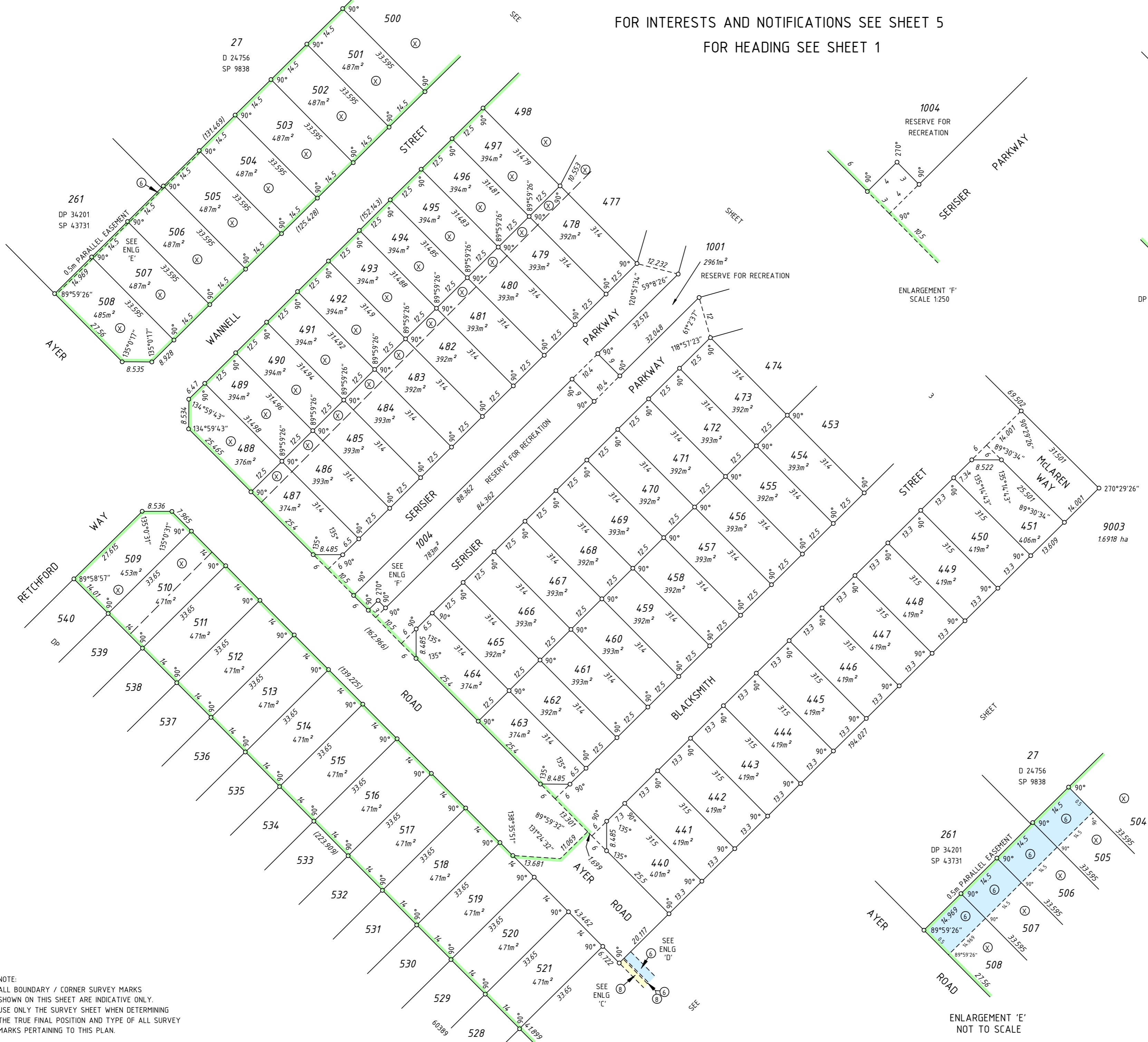
DEPOSITED PLAN	
63468	
SHEET 1	OF 5
VERSION 2	



NOTE:
ALL BOUNDARY / CORNER SURVEY MARKS SHOWN ON THIS SHEET ARE INDICATIVE ONLY. USE ONLY THE SURVEY SHEET WHEN DETERMINING THE TRUE FINAL POSITION AND TYPE OF ALL SURVEY MARKS PERTAINING TO THIS PLAN.

Reg. 26A (1) - final marking deferred (Approval ID D25-09 dated 8 May 2009; Landgate file 02138-2009)
SURVEY CARRIED OUT UNDER REGULATION 26A SPECIAL SURVEY AREA GUIDELINES
SEE SHEETS FOR SURVEY INFORMATION.

FOR INTERESTS AND NOTIFICATIONS SEE SHEET 5
FOR HEADING SEE SHEET 1



SCALE: 1:750
AT A2 SIZE
ALL DISTANCES ARE IN METRES

10 0 10 20 30 40

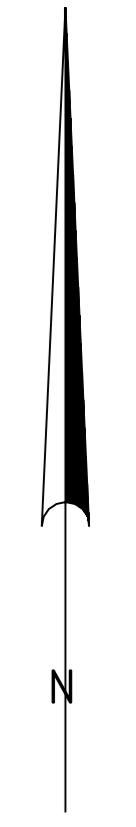
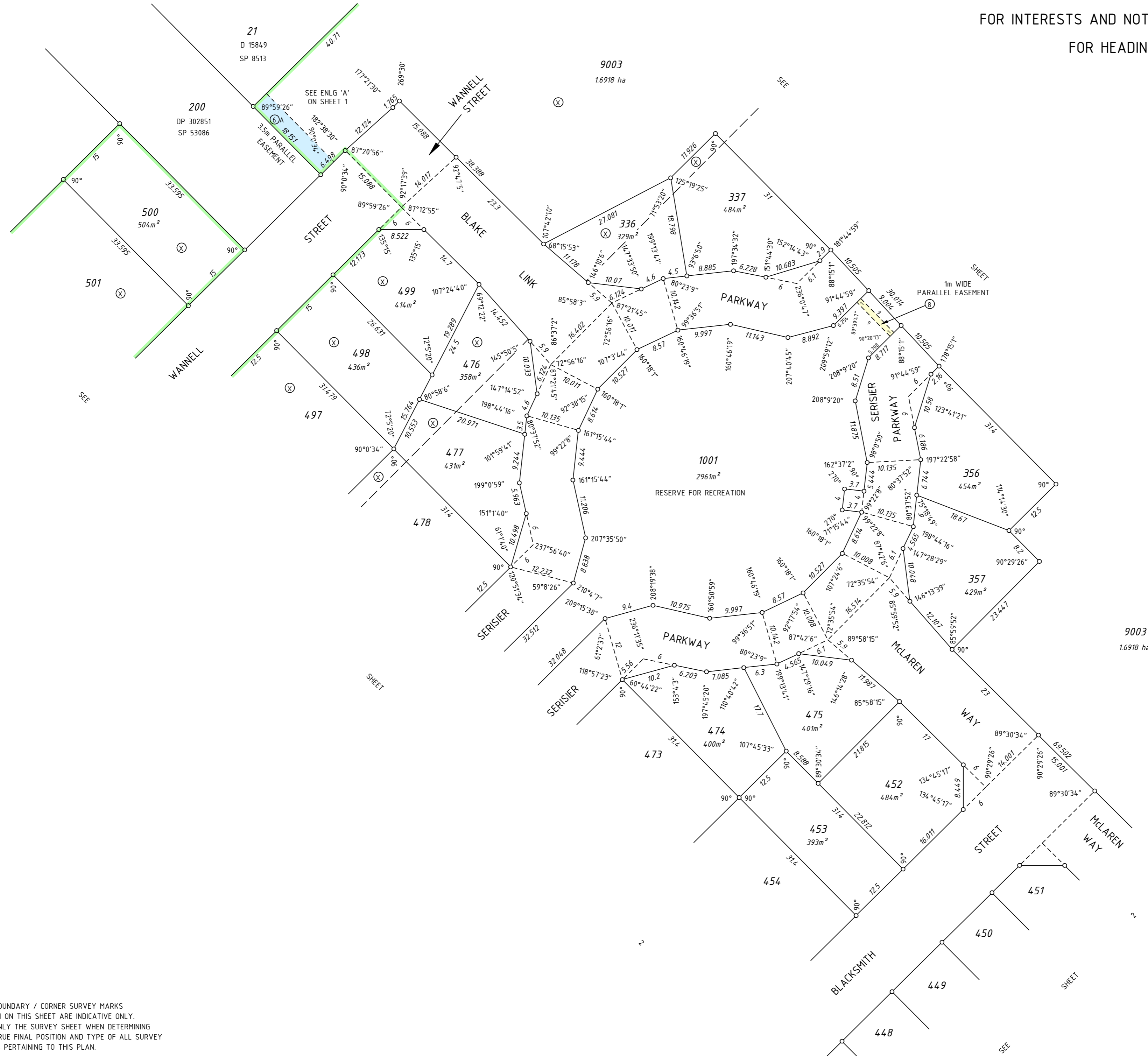
Licensed Surveyor Date
FUGRO SPATIAL SOLUTIONS LS/18224-67 R.1
APPROVED BY
WESTERN AUSTRALIAN PLANNING COMMISSION
FILE 132256
DELEGATED UNDER S16 P & D ACT 2005
DATE
SHEET 2 OF 5
VERSION 2

Landgate
Western Australian Land Information Authority



DEPOSITED PLAN
63468

NOTE:
ALL BOUNDARY / CORNER SURVEY MARKS
SHOWN ON THIS SHEET ARE INDICATIVE ONLY.
USE ONLY THE SURVEY SHEET WHEN DETERMINING
THE TRUE FINAL POSITION AND TYPE OF ALL SURVEY
MARKS PERTAINING TO THIS PLAN.

FOR INTERESTS AND NOTIFICATIONS SEE SHEET 5
FOR HEADING SEE SHEET 1



NOTE:
ALL BOUNDARY / CORNER SURVEY MARKS
SHOWN ON THIS SHEET ARE INDICATIVE ONLY.
USE ONLY THE SURVEY SHEET WHEN DETERMINING
THE TRUE FINAL POSITION AND TYPE OF ALL SURVEY
MARKS PERTAINING TO THIS PLAN.

SCALE: 1:500 AT A2 SIZE ALL DISTANCES ARE IN METRES		0 5 10 20 30	
Licensed Surveyor Date FUGRO SPATIAL SOLUTIONS LS/18224-67 R.1 APPROVED BY WESTERN AUSTRALIAN PLANNING COMMISSION FILE 132256		  Western Australian Land Information Authority	
DELEGATED UNDER S16 P & D ACT 2005 DATE		DEPOSITED PLAN 63468	
SHEET 3 OF 5 VERSION 2			

LOT	FORMER TENURE	ON PLAN/DIA	TITLE
336	Pt LOT 195 Pt LOT 226 Pt LOT 227 Pt LOT 500	P 6829 P 6829 P 6829 D 59734	2033-431 2033-460 2033-461 1574-375
337	Pt LOT 195 Pt LOT 226 Pt LOT 500	P 6829 P 6829 D 59734	2033-431 2033-460 1574-375
356	Pt LOT 195 Pt LOT 212 Pt LOT 223 Pt LOT 224	P 6829 P 6829 P 6829 P 6829	2033-431 2033-446 2033-457 2033-458
357	Pt LOT 212 Pt LOT 223 Pt LOT 224	P 6829 P 6829 P 6829	2033-446 2033-457 2033-458
440	Pt LOT 123 Pt LOT 124	P 6828 P 6828	2090-219 2090-220
441-443	Pt LOT 124 Pt LOT 581	P 6828 This Plan (Inset)	2090-220
444	Pt LOT 124 Pt LOT 152 Pt LOT 153 Pt LOT 581	P 6828 P 6828 P 6828 This Plan (Inset)	2090-220 2090-245 2090-246
445, 446	Pt LOT 151 Pt LOT 152 Pt LOT 581	P 6828 P 6828 This Plan (Inset)	2090-244 2090-245
447	Pt LOT 150 Pt LOT 151 Pt LOT 581	P 6828 P 6828 This Plan (Inset)	2090-243 2090-244
448	Pt LOT 150 Pt LOT 151 Pt LOT 219 Pt LOT 581	P 6828 P 6828 P 6829 This Plan (Inset)	2090-243 2090-244 2033-453
449	Pt LOT 150 Pt LOT 219 Pt LOT 220 Pt LOT 581	P 6828 P 6829 P 6829 This Plan (Inset)	2090-243 2033-453 2033-454
450	Pt LOT 219 Pt LOT 220 Pt LOT 221 Pt LOT 581	P 6829 P 6829 P 6829 This Plan (Inset)	2033-453 2033-454 2033-455
451	Pt LOT 220 Pt LOT 221	P 6829 P 6829	2033-454 2033-455
452	Pt LOT 148 Pt LOT 149 Pt LOT 222 Pt LOT 223 Pt LOT 581	P 6828 P 6828 P 6829 P 6829 This Plan (Inset)	2090-241 2090-242 SP29597 2033-457
453	Pt LOT 148 Pt LOT 149	P 6828 P 6828	2090-241 2090-242
454	Pt LOT 148 Pt LOT 149 Pt LOT 150	P 6828 P 6828 P 6828	2090-241 2090-242 2090-243
455	Pt LOT 148 Pt LOT 149 Pt LOT 150 Pt LOT 154 Pt LOT 155	P 6828 P 6828 P 6828 P 6828 P 6828	2090-241 2090-242 2090-243 2090-247 2090-248
456	Pt LOT 150 Pt LOT 154 Pt LOT 155	P 6828 P 6828 P 6828	2090-243 2090-247 2090-248
457	Pt LOT 152 Pt LOT 153 Pt LOT 154 Pt LOT 155 Pt LOT 581	P 6828 P 6828 P 6828 P 6828 This Plan (Inset)	2090-245 2090-246 2090-247 2090-248
458	Pt LOT 153 Pt LOT 154 Pt LOT 581	P 6828 P 6828 This Plan (Inset)	2090-246 2090-247

LOT	FORMER TENURE	ON PLAN/DIA	TITLE
459, 460	Pt LOT 153 Pt LOT 581 Pt LOT 1610	P 6828 This Plan (Inset) P 6828	2090-246 LR3150-5
461-464, 468	Pt LOT 581 Pt LOT 1610	This Plan (Inset) P 6828	LR3150-5
465-467 469	Pt LOT 1610 Pt LOT 581	P 6828 This Plan (Inset)	LR3150-5
470	Pt LOT 154 Pt LOT 155 Pt LOT 156 Pt LOT 581	P 6828 P 6828 P 6828 This Plan (Inset)	2090-247 2090-248 2090-249
471	Pt LOT 155 Pt LOT 156	P 6828 P 6828	2090-248 2090-249
472	Pt LOT 147 Pt LOT 148 Pt LOT 155 Pt LOT 156	P 6828 P 6828 P 6828 P 6828	2090-240 2090-241 2090-248 2090-249
473, 474	Pt LOT 147 Pt LOT 148	P 6828 P 6828	2090-240 2090-241
475	Pt LOT 147 Pt LOT 148 Pt LOT 223 Pt LOT 581	P 6828 P 6828 P 6829 This Plan (Inset)	2090-240 2090-241 2033-457
476	Pt LOT 145 Pt LOT 227 Pt LOT 581	P 6828 P 6829 This Plan (Inset)	2090-238 2033-461
477	Pt LOT 145 Pt LOT 146 Pt LOT 581	P 6828 P 6828 This Plan (Inset)	2090-238 2090-239
478	Pt LOT 145 Pt LOT 146	P 6828 P 6828	2090-238 2090-239
479	Pt LOT 143 Pt LOT 145 Pt LOT 146 Pt LOT 157 Pt LOT 158	P 6828 P 6828 P 6828 P 6828 P 6828	2090-236 2090-238 2090-239 2090-250 2090-251
480	Pt LOT 142 Pt LOT 143 Pt LOT 157 Pt LOT 158	P 6828 P 6828 P 6828 P 6828	2090-235 2090-236 2090-250 2090-251
481	Pt LOT 141 Pt LOT 142 Pt LOT 157 Pt LOT 158	P 6828 P 6828 P 6828 P 6828	2090-234 2090-235 2090-250 2090-251
482	Pt LOT 141 Pt LOT 158 Pt LOT 159	P 6828 P 6828 P 6828	2090-234 2090-251 2090-252
483	Pt LOT 140 Pt LOT 141 Pt LOT 159	P 6828 P 6828 P 6828	2090-233 2090-234 2090-252
484	Pt LOT 140 Pt LOT 159 Pt LOT 160	P 6828 P 6828 P 6828	2090-233 2090-252 2090-253
485	Pt LOT 139 Pt LOT 140 Pt LOT 160 Pt LOT 161	P 6828 P 6828 P 6828 P 6828	2090-232 2090-233 2090-253 2090-254
486, 487	Pt LOT 139 Pt LOT 161	P 6828 P 6828	2090-232 2090-254
488, 489	Pt LOT 139	P 6828	2090-232
490	Pt LOT 139 Pt LOT 140	P 6828 P 6828	2090-232 2090-233
491	Pt LOT 140	P 6828	2090-233
492	Pt LOT 140 Pt LOT 141	P 6828 P 6828	2090-233 2090-234
493	Pt LOT 141	P 6828	2090-234
494	Pt LOT 141 Pt LOT 142	P 6828 P 6828	2090-234 2090-235

LOT	FORMER TENURE	ON PLAN/DIA	TITLE
495	Pt LOT 142 Pt LOT 143	P 6828 P 6828	2090-235 2090-236
496	Pt LOT 143 Pt LOT 145	P 6828 P 6828	2090-236 2090-238
497	Pt LOT 143 Pt LOT 144 Pt LOT 145	P 6828 P 6828 P 6828	2090-236 2090-237 2090-238
498	Pt LOT 144 Pt LOT 145 Pt LOT 581	P 6828 P 6828 This Plan (Inset)	2090-237 2090-238
499	Pt LOT 144 Pt LOT 145 Pt LOT 227 Pt LOT 581 Pt LOT 500	P 6828 P 6828 P 6829 This Plan (Inset) D 59734	2090-237 2090-238 2033-461 1574-375
500	Pt LOT 229	P 6828	2090-255
501	Pt LOT 229 Pt LOT 230	P 6828 P 6828	2090-255 2090-256
502	Pt LOT 230	P 6828	2090-256
503	Pt LOT 230 Pt LOT 231	P 6828 P 6828	2090-256 2090-257
504	Pt LOT 231	P 6828	2090-257
505	Pt LOT 231 Pt LOT 232	P 6828 P 6828	2090-257 2090-258
506	Pt LOT 232	P 6828	2090-258
507	Pt LOT 232 Pt LOT 233	P 6828 P 6828	2090-258 2090-259
508	Pt LOT 233	P 6828	2090-259
509-511	Pt LOT 117 Pt LOT 9002	P 6828 DP 60389	2090-213 2708-340
512-521	Pt LOT 9002	DP 60389	2708-340
1001	Pt LOT 146 Pt LOT 147 Pt LOT 157 Pt LOT 195 Pt LOT 224 Pt LOT 225 Pt LOT 226 Pt LOT 581	P 6828 P 6828 P 6828 P 6829 P 6829 P 6829 P 6829 This Plan (Inset)	2090-239 2090-240 2090-250 2033-431 2033-458 2033-459 2033-460
1004	Pt LOT 157 Pt LOT 581 Pt LOT 1610	P 6828 This Plan (Inset) P 6828	2090-250 LR3150-5
9003	Pt LOT 123 Pt LOT 124 LOT 125 LOT 126 LOT 127 LOT 128 Pt LOT 195 Pt LOT 212 LOT 213 LOT 214 LOT 215 LOT 216 Pt LOT 217 LOT 218 Pt LOT 219 Pt LOT 220 Pt LOT 221 Pt LOT 222 Pt LOT 223 Pt LOT 227 Pt LOT 581 Pt LOT 500 Pt LOT 9002	P 6828 P 6828 P 6828 P 6828 P 6828 P 6828 P 6829 P 6829 P 6829 P 6829 P 6829 P 6829 P 6829 P 6829 P 6829 P 6829 P 6829 P 6829 P 6829 This Plan (Inset) D 59734 DP 60389	2090-219 2090-220 2090-221 2090-222 2090-223 2090-224 2033-431 2033-446 2033-447 2033-448 2033-449 2033-450 2033-451 2033-452 2033-453 2033-454 2033-455 SP29597 2033-457 2033-461 1574-375 2708-340

INTERESTS AND NOTIFICATIONS

SUBJECT	PURPOSE	STATUTORY REFERENCE	ORIGIN	LAND BURDENED	BENEFIT TO	COMMENTS
⊗ SHEET 1	MINERAL RESERVATION	SECTION 15 OF THE PUBLIC WORKS ACT		LOTS 336, 337, 476-510 & 9003		
⑥	EASEMENT (SEWERAGE)	SECTION 167 OF THE P. AND D. ACT REG. 6	THIS PLAN	LOTS 505-508, 9003	WATER CORPORATION	
⑥A	EASEMENT (SEWERAGE)	SECTION 167 OF THE P. AND D. ACT REG. 6	THIS PLAN	LOT 9003	WATER CORPORATION	
⑧	EASEMENT (UNDERGROUND ELECTRIC)	SECTION 167 OF THE P. AND D. ACT REG. 8	THIS PLAN	LOTS 1001 & 9003	ELECTRICITY NETWORKS CORPORATION	
	RESTRICTIVE COVENANT	SECTION 136D OF THE T.L.A.	THIS PLAN AND DOC	LOTS 336, 337, 356, 357, 440-521	LOTS 336,337,356, 357, 440-521	EXPIRES 31/12/2018
LOTS 1001 & 1004	RESERVE FOR RECREATION NOTIFICATION	VESTS IN CROWN UNDER SEC. 152 OF THE P. AND D. ACT SECTION 165 OF THE P. AND D. ACT	THIS PLAN DOC	LOTS 336, 337, 356, 357, 440-521		LAND SUBJECT TO AIRCRAFT NOISE

SCALE: AT A2 SIZE
ALL DISTANCES ARE IN METRES

NOT TO SCALE

Licensed Surveyor Date
FUGRO SPATIAL SOLUTIONS LS/18224-67 R:1
APPROVED BY
WESTERN AUSTRALIAN PLANNING COMMISSION
FILE 132256
DELEGATED UNDER S16 P & D ACT 2005
DATE
SHEET 5 OF 5
VERSION 2



Landgate
Western Australian Land Information Authority

DEPOSITED PLAN
63468