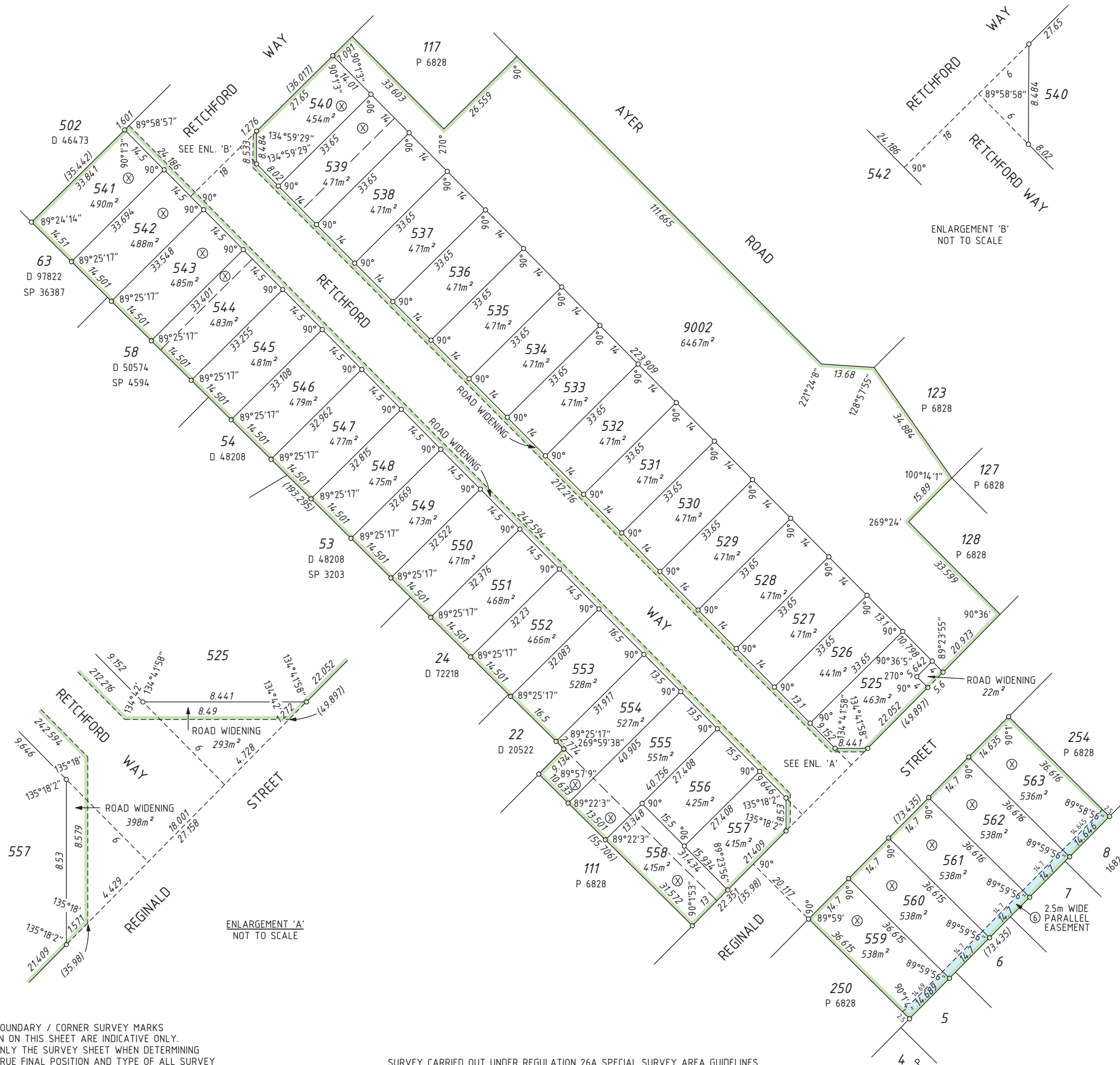


VER.	AMENDMENT	AUTHORISED BY	DATE
2	ADD 136D RESTRICTIVE COVENANT	M. HORE	1/12/2008

FOR INTERESTS AND NOTIFICATIONS SEE SHEET 2



TYPE FREEHOLD		
PURPOSE SUBDIVISION		
PLAN OF		
LOTS 525 - 563 (inc), 9002, EASEMENT, ROAD WIDENINGS & RESTRICTIVE COVENANT		
DISTRICT CANNING	SSA YES	
TOWNSITE	FORMER TENURE	
FILE	SEE TABLE (SHEET 2)	
LOCAL AUTHORITY CITY OF CANNING		
LOCALITY QUEENS PARK		
INDEX ON BG 34(2) 18.19	FIELD BOOK 98175	
INDEX BG 34(2) 19.19		
SCALE: 1:750		
AT A2 SIZE		
ALL DISTANCES ARE IN METRES		
SURVEYOR'S CERTIFICATE - Reg 54	SURVEYOR'S CERTIFICATE - Compiled	
I, MAX HORE hereby certify that this plan is accurate and is a correct representation of the - (a) * survey; and/or (b) * calculations from measurements, undertaken for the purposes of this plan and that it complies with the relevant written law(s) in relation to which it is lodged. (* delete if applicable)	I hereby certify that this compiled plan (a) is a correct and accurate representation of the survey(s) of the subject land; and (b) is in accordance with the relevant law in relation to which it is lodged. (* delete if applicable)	
Max Hore Licensed Surveyor	20/10/2008 Date	
SURVEY FIRM FUGRO FUGRO SPATIAL SOLUTIONS Pty. Ltd. 18 PROWSE STREET WEST PERTH, W.A., 6005 TEL. (08) 9282 4100 FAX. (08) 9322 1775 QUEENS PARK - STAGE 1 68/18224-55 Rev:1		
LODGED	TYPE OF VALIDATION	APPROVED BY
DATE	FULL AUDIT	WESTERN AUSTRALIAN PLANNING COMMISSION
FEE PAID	LEGAL COMPONENT	FILE 132256
ASSESS No.	DOCKET	DELEGATED UNDER S16 P & D ACT 2005
	CERTIFIED CORRECT	DATE
	I.S.C.	
	F.S.C.	
IN ORDER FOR DEALINGS		
SUBJECT TO		
FOR INSPECTOR OF PLANS & SURVEYS / AUTHORISED LAND OFFICER DATE		
APPROVED REG 26A (4)		
INSPECTOR OF PLANS & SURVEYS / AUTHORISED LAND OFFICER DATE		
 Western Australian Land Information Authority		
DEPOSITED PLAN		
<h1>60389</h1>		
SHEET 1	OF 3	VERSION 2

NOTE:
ALL BOUNDARY / CORNER SURVEY MARKS SHOWN ON THIS SHEET ARE INDICATIVE ONLY. USE ONLY THE SURVEY SHEET WHEN DETERMINING THE TRUE FINAL POSITION AND TYPE OF ALL SURVEY MARKS PERTAINING TO THIS PLAN.

SURVEY CARRIED OUT UNDER REGULATION 26A SPECIAL SURVEY AREA GUIDELINES SEE SHEET 3 FOR SURVEY INFORMATION.



FOR HEADING SEE SHEET 1

FORMER TENURE TABLE			
LOT	FORMER TENURE	ON PLAN/DIA	TITLE
525 & 526	PT LOT 129	P 6828	2090-225
	PT LOT 130	P 6828	2090-226
527	PT LOT 122	P 6828	2090-218
	PT LOT 129	P 6828	2090-225
	PT LOT 130	P 6828	2090-226
	PT LOT 131	P 6828	2090-227
528	PT LOT 122	P 6828	2090-218
	PT LOT 131	P 6828	2090-227
529	PT LOT 121	P 6828	2090-217
	PT LOT 122	P 6828	2090-218
	PT LOT 131	P 6828	2090-227
	PT LOT 132	P 6828	1571-379
530	PT LOT 121	P 6828	2090-217
	PT LOT 132	P 6828	1571-379
	PT LOT 133	P 6828	2090-228
531	PT LOT 121	P 6828	2090-217
	PT LOT 133	P 6828	2090-228
532	PT LOT 120	P 6828	2090-216
	PT LOT 121	P 6828	2090-217
	PT LOT 133	P 6828	2090-228
	PT LOT 134	P 6828	2090-229
533	PT LOT 120	P 6828	2090-216
	PT LOT 134	P 6828	2090-229
	PT LOT 135	P 6828	1567-985
534	PT LOT 120	P 6828	2090-216
	PT LOT 135	P 6828	1567-985
535	PT LOT 119	P 6828	2090-215
	PT LOT 120	P 6828	2090-216
	PT LOT 135	P 6828	1567-985
	PT LOT 136	P 6828	2090-230
536	PT LOT 118	P 6828	2090-214
	PT LOT 119	P 6828	2090-215
	PT LOT 136	P 6828	2090-230
	PT LOT 137	P 6828	2090-231
537	PT LOT 118	P 6828	2090-214
	PT LOT 137	P 6828	2090-231
538	PT LOT 115	P 6828	2090-212
	PT LOT 116	P 6828	1571-375
	PT LOT 118	P 6828	2090-214
	PT LOT 137	P 6828	2090-231
539 & 540	PT LOT 115	P 6828	2090-212
	PT LOT 116	P 6828	1571-375
541	PT LOT 100	P 6828	2090-201
542	PT LOT 100	P 6828	2090-201
	PT LOT 101	P 6828	2090-202
543	PT LOT 101	P 6828	2090-202
544	PT LOT 101	P 6828	2090-202
	PT LOT 102	P 6828	2090-203
545	PT LOT 102	P 6828	2090-203
546	PT LOT 102	P 6828	2090-203
	PT LOT 103	P 6828	2090-204
547	PT LOT 103	P 6828	2090-204
	PT LOT 104	P 6828	2090-205
548	PT LOT 104	P 6828	2090-205
	PT LOT 104	P 6828	2090-205
549	PT LOT 105	P 6828	2090-206
	PT LOT 105	P 6828	2090-206
550	PT LOT 105	P 6828	2090-206
551	PT LOT 105	P 6828	2090-206
	PT LOT 106	P 6828	2090-207
552	PT LOT 106	P 6828	2090-207
	PT LOT 107	P 6828	1571-377
553	PT LOT 107	P 6828	1571-377
554	PT LOT 107	P 6828	1571-377
	PT LOT 108	P 6828	1555-110
555	PT LOT 108	P 6828	1555-110
	PT LOT 109	P 6828	2090-208
	PT LOT 110	P 6828	2090-209
556 & 557	PT LOT 109	P 6828	2090-208
	PT LOT 110	P 6828	2090-209
558	PT LOT 110	P 6828	2090-209
559	PT LOT 251	P 6828	1551-422
	PT LOT 251	P 6828	1551-422
560	PT LOT 251	P 6828	1551-422
	PT LOT 252	P 6828	2090-260
561	PT LOT 252	P 6828	2090-260
562	PT LOT 252	P 6828	2090-260
	PT LOT 253	P 6828	1571-374
563	PT LOT 253	P 6828	1571-374
9002	PT LOT 116	P 6828	1571-375
	PT LOT 118	P 6828	2090-214
	PT LOT 119	P 6828	2090-215
	PT LOT 120	P 6828	2090-216
	PT LOT 121	P 6828	2090-217
	PT LOT 122	P 6828	2090-218

INTERESTS AND NOTIFICATIONS

SUBJECT	PURPOSE	STATUTORY REFERENCE	ORIGIN	LAND BURDENED	BENEFIT TO	COMMENTS
⊗ SHEET 1	MINERAL RESERVATION	SECTION 15 OF THE PUBLIC WORKS ACT	P 6828	LOTS 539-544, 554, 555, 558 & 559-563		
Ⓢ SHEET 1	EASEMENT (SEWERAGE)	SECTION 167 OF THE P. & D. ACT REG. 6	THIS PLAN	LOT 559-563	WATER CORPORATION	
	RESTRICTIVE COVENANT	SECTION 136D OF THE T.L.A.	THIS PLAN & DOC	LOTS 525-563	LOTS 525-563	EXPIRING ON 31/12/2018
	NOTIFICATION	SECTION 165 OF THE P. & D. ACT	DOC	LOTS 525-563		LAND SUBJECT TO AIRCRAFT NOISE

SCALE: NOT TO SCALE
AT A2 SIZE
ALL DISTANCES ARE IN METRES

<i>Max Hancock</i>	20/10/2008		
Licensed Surveyor	Date		
FUGRO SPATIAL SOLUTIONS 66/18224-55 Rev:1		APPROVED BY	
WESTERN AUSTRALIAN PLANNING COMMISSION		Western Australian Land Information Authority	
FILE	132256	DEPOSITED PLAN	
DELEGATED UNDER S16 P & D ACT 2005			
DATE		60389	
SHEET	2	OF	3
VERSION 2			